

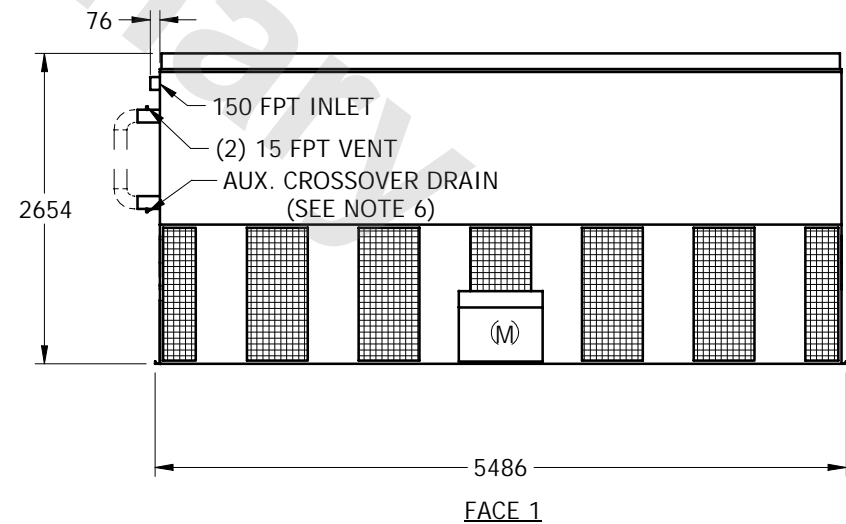
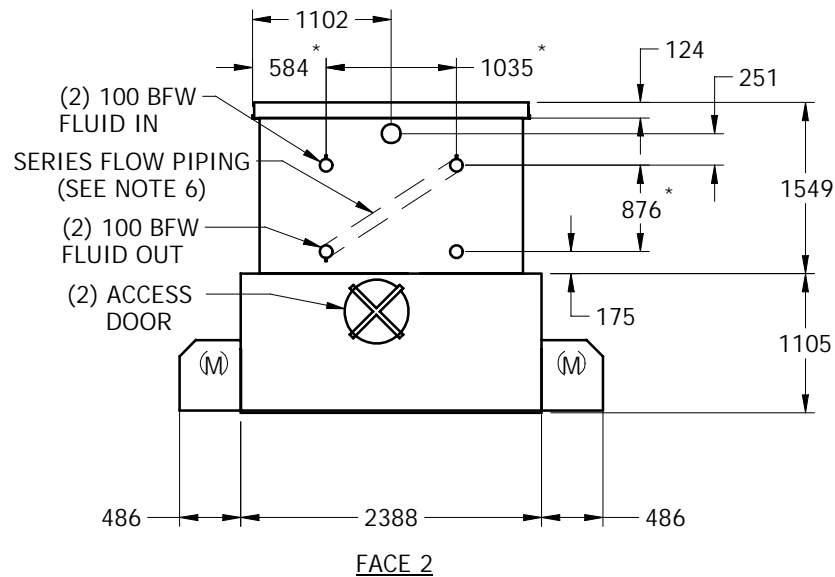
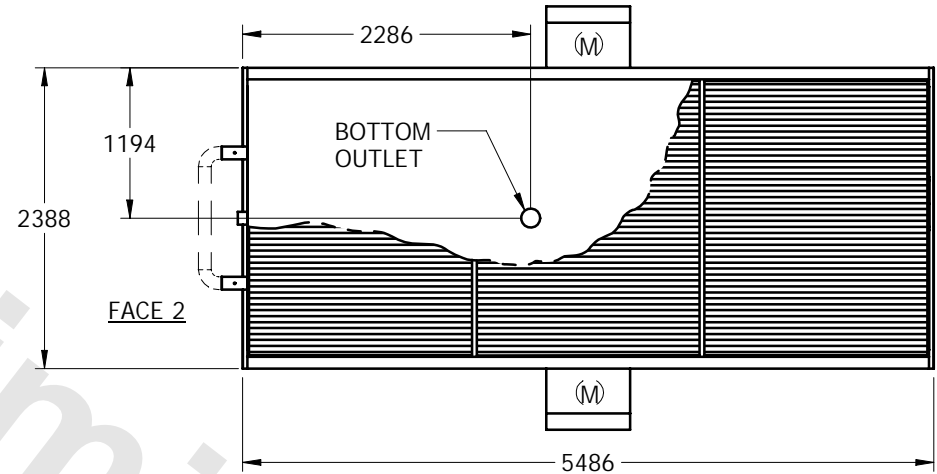
EVAPCO, INC.



UNIT	CLOSED CIRCUIT COOLER	MODEL #	LPT-316L	SCALE	NTS	DWG. #	WL081810-MRC-SR	REV.	-	DATE	5/18/2024	SERIAL #	
------	-----------------------	---------	----------	-------	-----	--------	-----------------	------	---	------	-----------	----------	--

NOTES:

1. (M)- FAN MOTOR LOCATION
2. MPT DENOTES MALE PIPE THREAD
FPT DENOTES FEMALE PIPE THREAD
BFW DENOTES BEVELED FOR WELDING
3. + UNIT WEIGHT DOES NOT INCLUDE
ACCESSORIES (SEE SEPARATE DRAWINGS
FOR ACCESSORIES)
4. 19mm DIA. MOUNTING HOLES. REFER TO
RECOMMENDED STEEL SUPPORT
DRAWING
5. * - APPROXIMATE DIMENSIONS DO NOT
USE FOR PRE-FABRICATION OF
CONNECTING PIPING.
6. SERIES FLOW PIPING AND AUX. CROSSOVER
DRAIN ARE BY OTHERS



SHIPPING WEIGHT	8540	kg +	OPERATING WEIGHT	11600	kg	HEAVIEST SECTION WEIGHT	8540	kg	NO. OF SHIPPING SECTIONS	1
-----------------	------	------	------------------	-------	----	-------------------------	------	----	--------------------------	---