

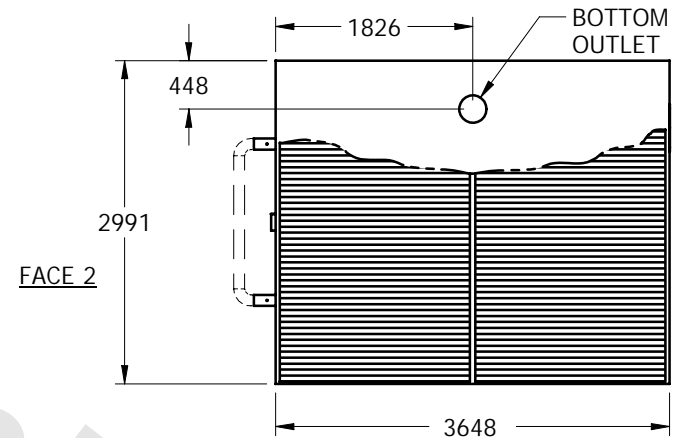
# EVAPCO, INC.



UNIT	CLOSED CIRCUIT COOLER	MODEL #	LPT-346L	SCALE	NTS	DWG. #	WLTM1208-MRE-SR	REV.	-	DATE	5/20/2024	SERIAL #	
------	-----------------------	---------	----------	-------	-----	--------	-----------------	------	---	------	-----------	----------	--

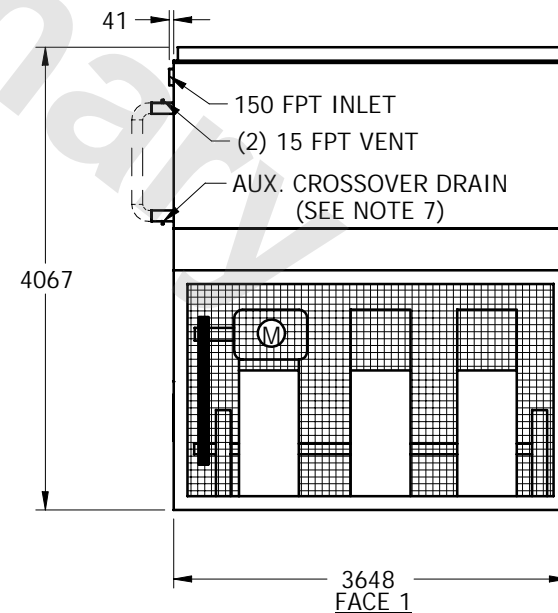
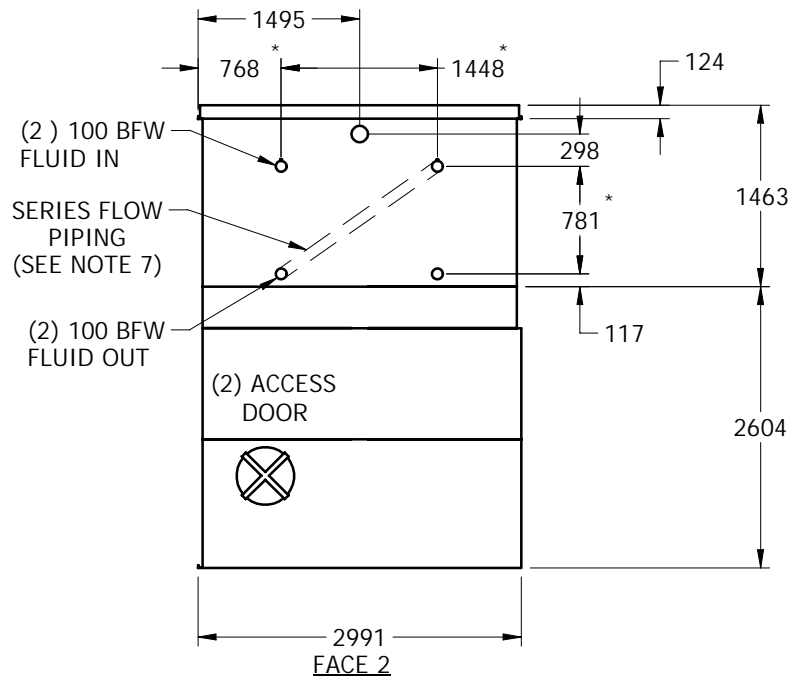
## NOTES:

1. (M) - FAN MOTOR LOCATION
2. HEAVIEST SECTION IS COIL SECTION
3. MPT DENOTES MALE PIPE THREAD  
FPT DENOTES FEMALE PIPE THREAD  
BFW DENOTES BEVELED FOR WELDING
4. + UNIT WEIGHT DOES NOT INCLUDE ACCESSORIES (SEE SEPARATE DRAWINGS FOR ACCESSORIES)
5. 19mm DIA. MOUNTING HOLES. REFER TO RECOMMENDED STEEL SUPPORT DRAWING
6. \* - APPROXIMATE DIMENSIONS DO NOT USE FOR PRE-FABRICATION OF CONNECTING PIPING.
7. SERIES FLOW PIPING AND AUX. CROSSOVER DRAIN ARE BY OTHERS



FACE 1

## PLAN VIEW



SHIPPING WEIGHT	7255	kg +	OPERATING WEIGHT	10100	kg	HEAVIEST SECTION WEIGHT	4870	kg	NO. OF SHIPPING SECTIONS	2
-----------------	------	------	------------------	-------	----	-------------------------	------	----	--------------------------	---