



BOX SIZE	H	U
12Cx24 6 ROW	155 1/4 [3943]	13'-11 3/4" [4261]
12Cx24 8 ROW	165 1/4 [4197]	14'-9 3/4" [4515]
12Cx24 10 ROW	175 1/4 [4451]	15'-7 3/4" [4769]
12Cx24 12 ROW	185 1/4 [4705]	16'-5 3/4" [5023]

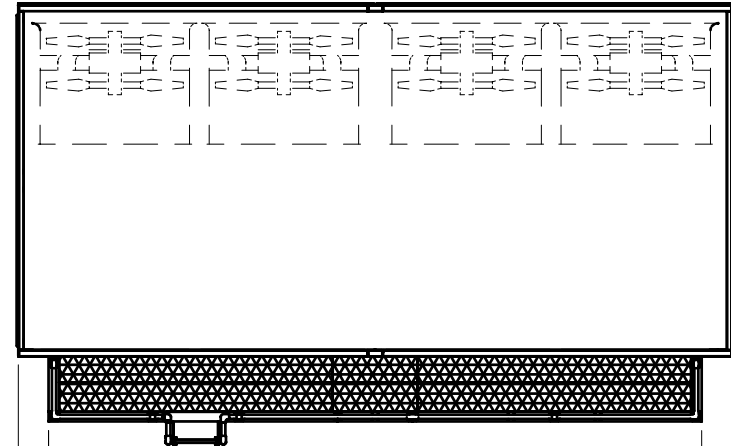
EXTERNAL SERVICE PLATFORM

OPTION A

DWG. # PLCP12C24EAA-ST

NOTES:

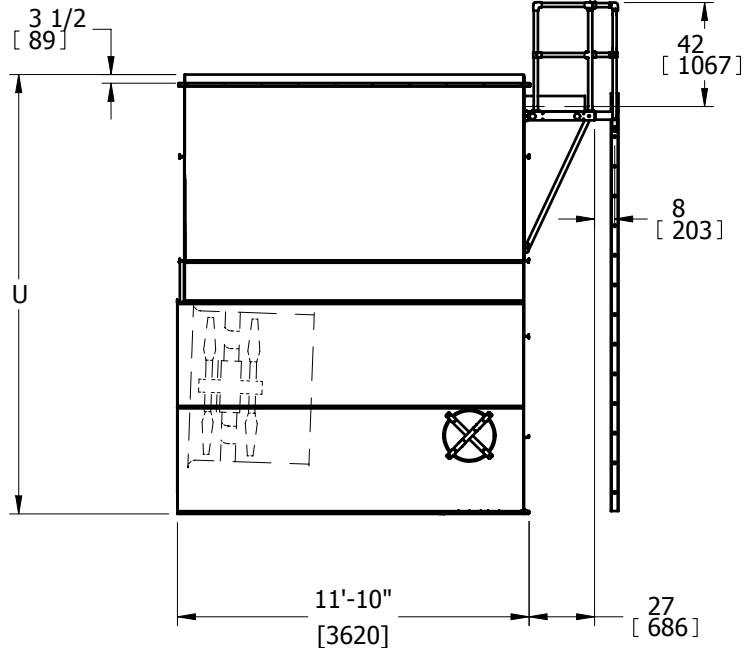
1. LADDER AND PLATFORM SHIP LOOSE.
FIELD INSTALLATION BY OTHERS IS REQUIRED.
2. THE BOTTOM OF THE LADDER DOES NOT EXTEND
PAST THE BASE OF THE UNIT. IF THE UNIT IS
ELEVATED THEN AN OPTIONAL EXTENDED LADDER
PACKAGE SHOULD BE CONSIDERED. (CONSULT FACTORY)
3. REFER TO RIGGING PACK FOR LADDER AND PLATFORM
MOUNTING INSTRUCTIONS.
4. THE PLATFORM AND LADDER ASSY. WEIGHS 1690 LBS. [770 Kg]
5. ANY POSSIBLE PIPEWORK AND/OR OBSTRUCTIONS
CONFLICTING WITH THE EXTERNAL SERVICE PLATFORM WILL
BE THE CUSTOMER'S RESPONSIBILITY FOR RELOCATION.



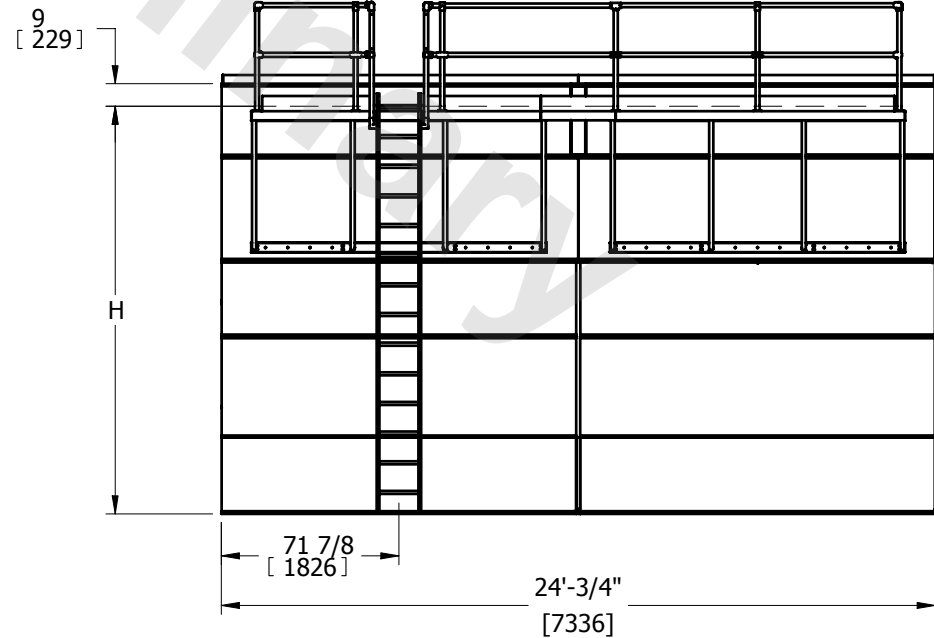
12 1/8
[308]

264 1/4
[6712]

PLAN VIEW



END VIEW



SIDE VIEW