

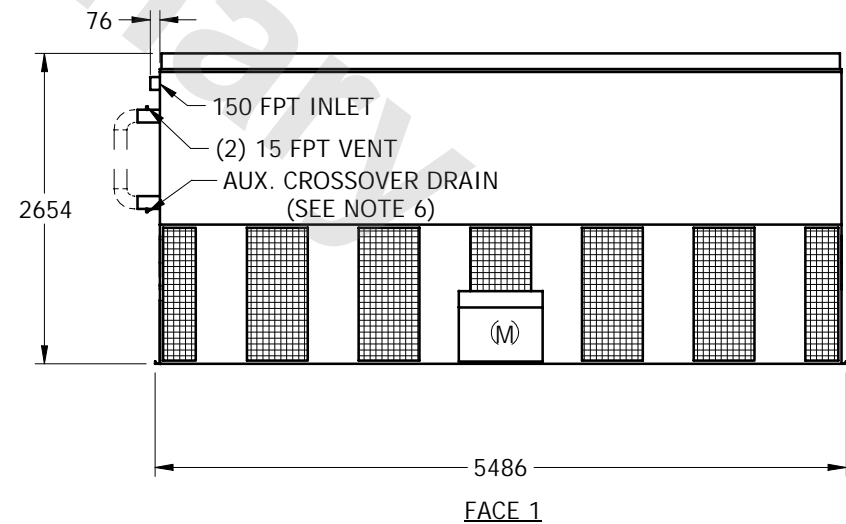
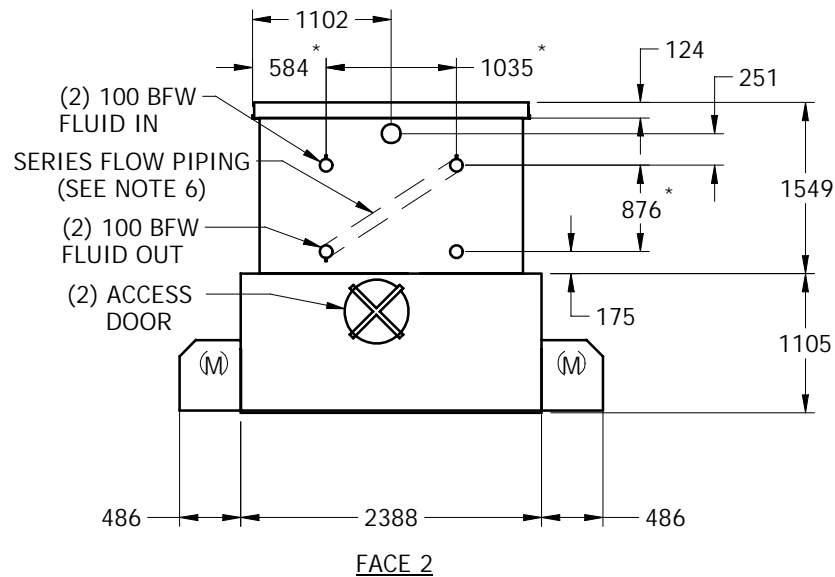
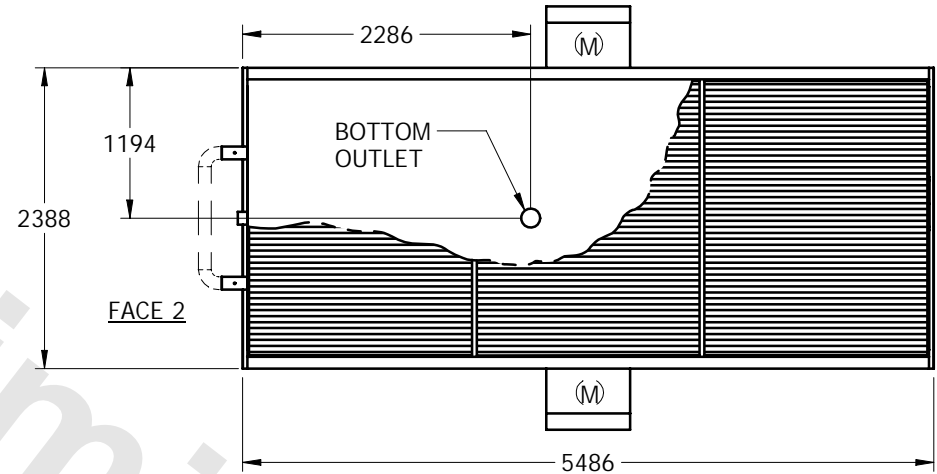
# EVAPCO, INC.



UNIT	CLOSED CIRCUIT COOLER	MODEL #	LPT-316L	SCALE	NTS	DWG. #	WL081810-MRC-SR	REV.	-	DATE	5/13/2024	SERIAL #	
------	-----------------------	---------	----------	-------	-----	--------	-----------------	------	---	------	-----------	----------	--

## NOTES:

1. (M)- FAN MOTOR LOCATION
2. MPT DENOTES MALE PIPE THREAD  
FPT DENOTES FEMALE PIPE THREAD  
BFW DENOTES BEVELED FOR WELDING
3. + UNIT WEIGHT DOES NOT INCLUDE  
ACCESSORIES (SEE SEPARATE DRAWINGS  
FOR ACCESSORIES)
4. 19mm DIA. MOUNTING HOLES. REFER TO  
RECOMMENDED STEEL SUPPORT  
DRAWING
5. \* - APPROXIMATE DIMENSIONS DO NOT  
USE FOR PRE-FABRICATION OF  
CONNECTING PIPING.
6. SERIES FLOW PIPING AND AUX. CROSSOVER  
DRAIN ARE BY OTHERS



SHIPPING WEIGHT	8540	kg +	OPERATING WEIGHT	11600	kg	HEAVIEST SECTION WEIGHT	8540	kg	NO. OF SHIPPING SECTIONS	1
-----------------	------	------	------------------	-------	----	-------------------------	------	----	--------------------------	---