

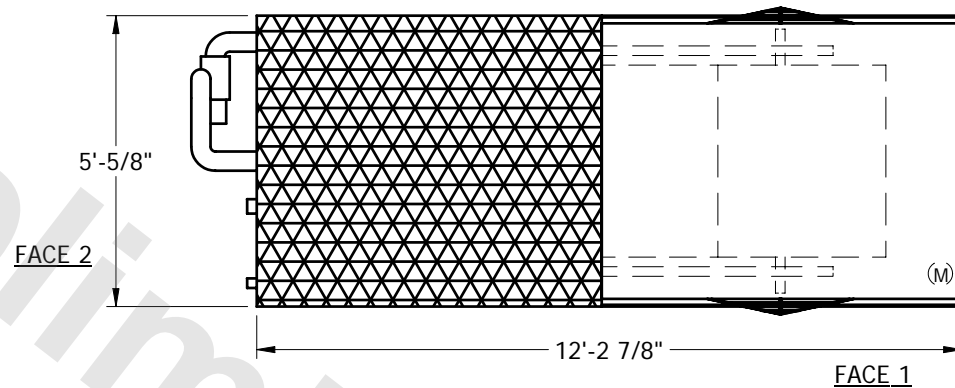
EVAPCO, INC.



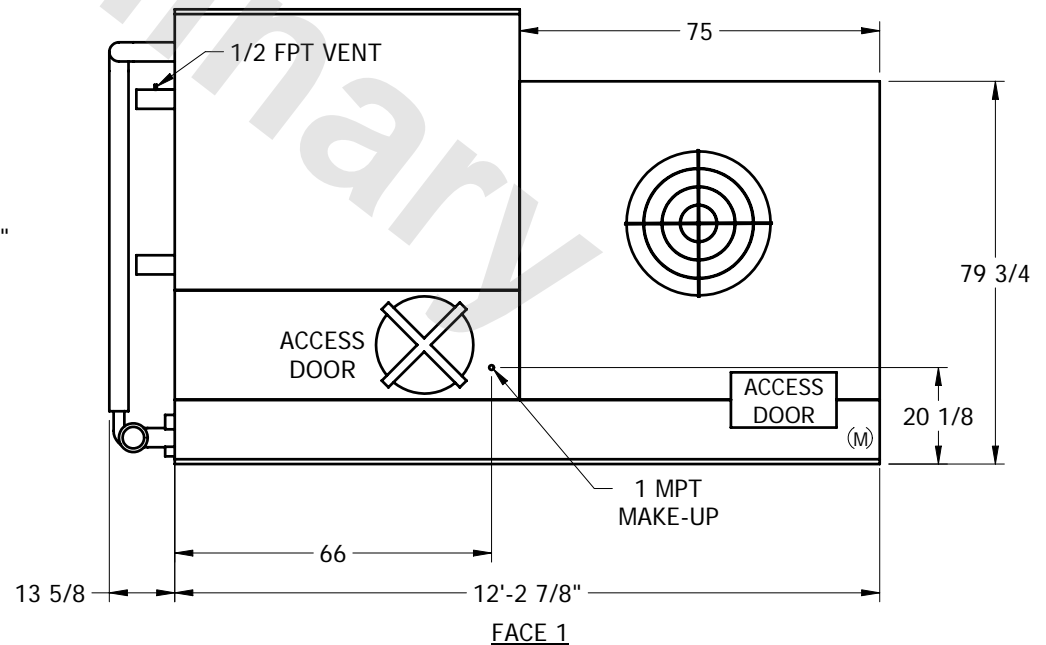
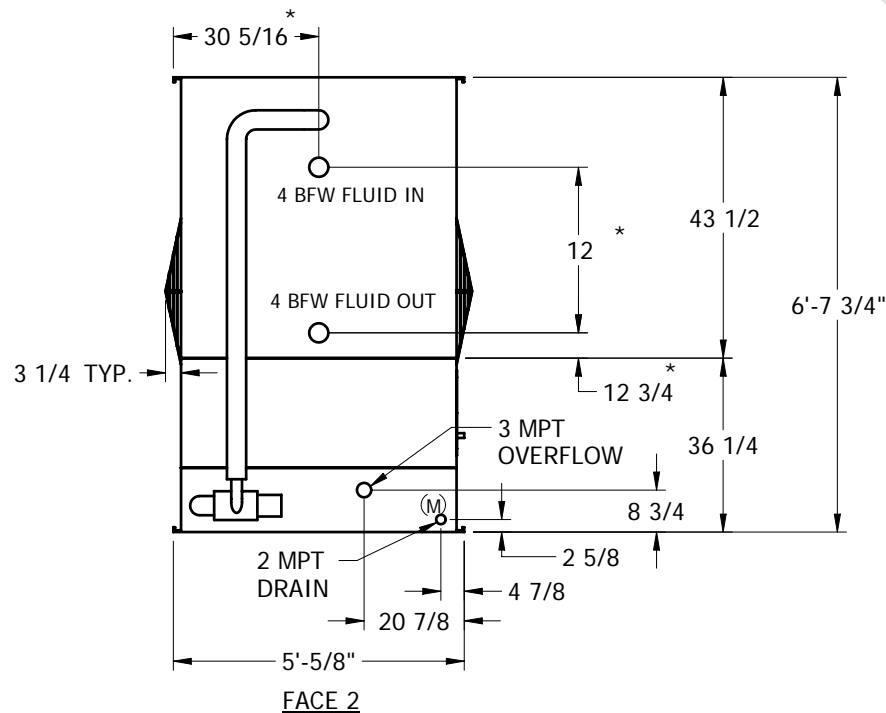
UNIT	CLOSED CIRCUIT COOLER	MODEL #	SCALE	DWG. #	REV.	DATE	SERIAL #
			NTS	WV050604-ERE-ST			

NOTES:

1. (M)- FAN MOTOR LOCATION
2. * -APPROXIMATE DIMENSIONS DO NOT USE FOR PRE-FABRICATION OF CONNECTION PIPING
3. MPT DENOTES MALE PIPE THREAD
FPT DENOTES FEMALE PIPE THREAD
BFW DENOTES BEVELED FOR WELDING
4. + UNIT WEIGHT DOES NOT INCLUDE ACCESSORIES (SEE SEPARATE DRAWINGS FOR ACCESSORIES)
5. 3/4" DIA. MOUNTING HOLES. REFER TO RECOMMENDED STEEL SUPPORT DRAWING
6. MAKE-UP WATER PRESSURE-20 psi MIN, 50 psi MAX



PLAN VIEW



SHIPPING WEIGHT	3580	lbs. +	OPERATING WEIGHT	5750	lbs.	HEAVIEST SECTION WEIGHT	3580	lbs.	NO. OF SHIPPING SECTIONS	1
-----------------	------	--------	------------------	------	------	-------------------------	------	------	--------------------------	---