

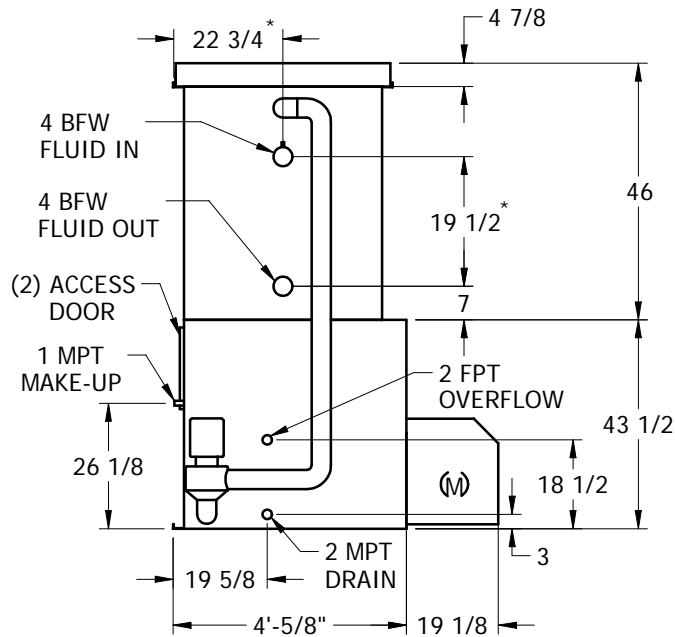
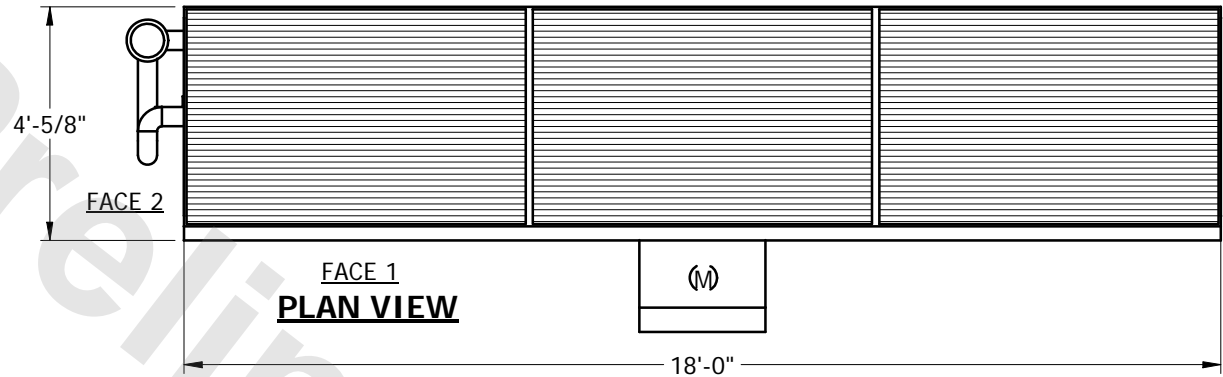
# EVAPCO, INC.



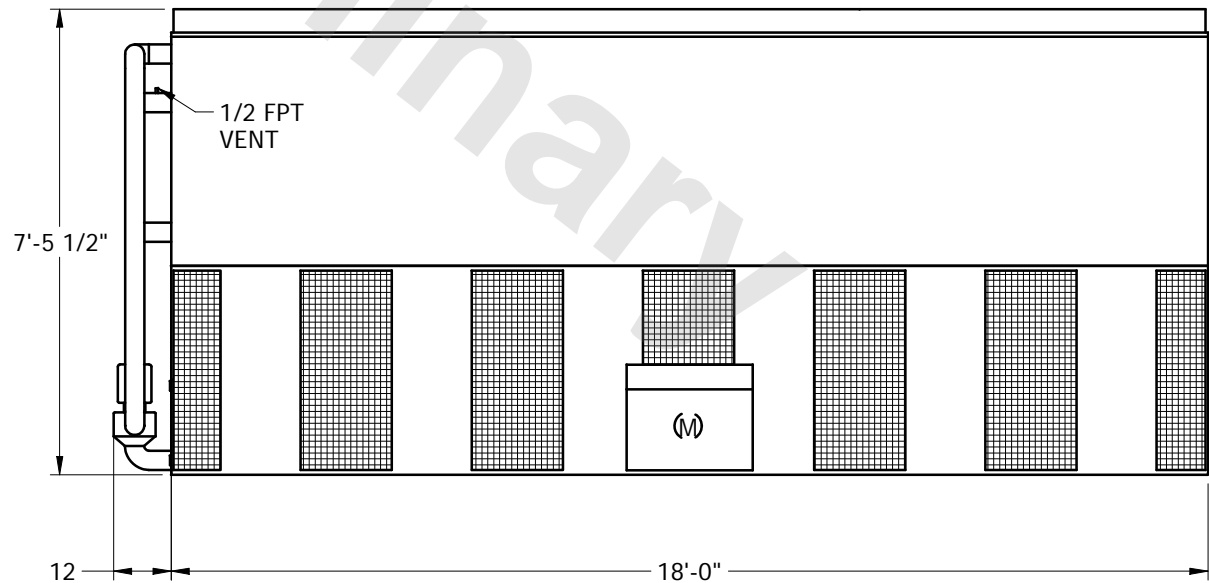
UNIT	CLOSED CIRCUIT COOLER	MODEL #	LSWA 116B	SCALE	NTS	DWG. #	WL041806-ERI-ST	REV.		DATE	4/17/2024	SERIAL #	
------	-----------------------	---------	-----------	-------	-----	--------	-----------------	------	--	------	-----------	----------	--

## NOTES:

1. (M) - FAN MOTOR LOCATION
2. MAKE-UP LOCATED 7 5/8" FROM CONNECTION END OF UNIT
3. MPT DENOTES MALE PIPE THREAD  
FPT DENOTES FEMALE PIPE THREAD  
BFW DENOTES BEVELED FOR WELDING
4. + UNIT WEIGHT DOES NOT INCLUDE ACCESSORIES (SEE SEPARATE DRAWINGS FOR ACCESSORIES)
5. 3/4" DIA. MOUNTING HOLES. REFER TO RECOMMENDED STEEL SUPPORT DRAWING
6. MAKE-UP WATER PRESSURE-20 psi MIN, 50 psi MAX
7. \* - APPROXIMATE DIMENSIONS DO NOT USE FOR PRE-FABRICATION OF CONNECTING PIPING.



FACE 2



FACE 1

SHIPPING WEIGHT	7550	+	OPERATING WEIGHT	10920	HEAVIEST SECTION WEIGHT	4860	NO. OF SHIPPING SECTIONS	2
-----------------	------	---	------------------	-------	-------------------------	------	--------------------------	---