

eco-Air Series

EVAPCO Controller Quick Start Guide

AIR COOLED · ADIABATIC · FLUID COOLERS · CO₂ GAS COOLERS · REFRIGERANT CONDENSERS



For EVAPCO authorized parts
and service, contact your local
EVAPCO representative today!



Product Preparation

After rigging, piping, and wiring the unit the next step is to perform the initial start-up and verify basic functionality. All products supplied with capacity control equipment (Variable Frequency Drive, EC motor controllers, adiabatic air precooling systems) are 'turn-key' products and have been factory tested and temperature/pressure setpoints have been pre-programmed with the submitted design criteria.

1. Install Temperature/Pressure Sensors

Temperature Sensor for Dry Coolers

The dry cooler temperature sensor and thermowell are supplied loose (located in the control panel) and should be installed by the customer into the common return pipework running back to the process. The thermowell has 1/2" (25.4 mm) NPT threads.

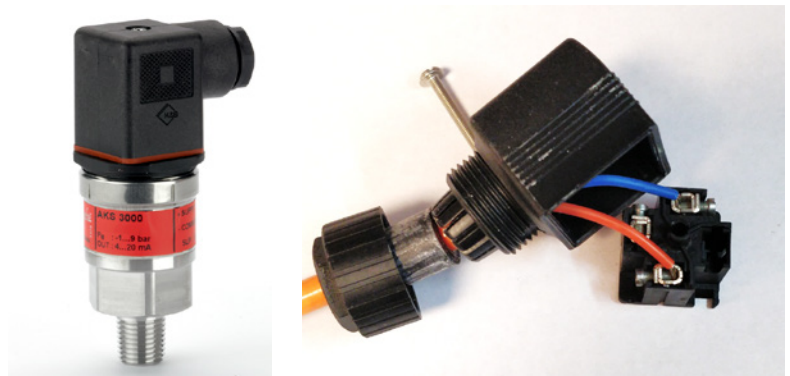
Note: The thermowell should be orientated vertically and a small amount of thermal paste added to the thermowell before the sensor is inserted. The thermal paste ensures a more accurate fluid temperature measurement. For units equipped with a mounted control panel, a small junction box is located on the coil connection end and will be factory wired from the main control panel. **Wire the temperature sensor to this junction box.** For units equipped with a common terminal box and a remotely mounted control panel, **the wiring should be made directly to the remote mounted control panel.** The recommended cabling for this connection is 2C-Shielded equivalent to Belden 3076F (refer to wiring diagram provided with submittal)

Pressure Transducer for Air Cooled Condensers

The air-cooled condenser pressure transducer is supplied loose (located in the control panel) and should be installed in the common hot gas inlet pipework for the unit. The pressure transducer has 1/4"-18 NPT threads. For units equipped with a mounted control panel, a small junction box is located on the coil connection end and will be factory wired from the main control panel. **Wire the pressure transducer to this junction box.** For units equipped with a common terminal box and a remotely mounted control panel, **the wiring should be made directly to the remote mounted control panel.** The pressure transducer is equipped with a DIN style connector. Ensure that the wiring is connected to the correct pins by referencing the leaflet provided with the transducer. The recommended cabling for this connection is 2C-Shielded equivalent to Belden 3076F (refer to wiring diagram provided with submittal)



Temperature Sensor (Fluid Cooler)



Pressure Transducer (Condenser)

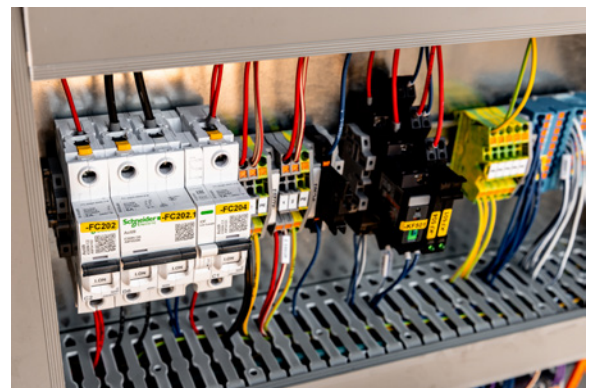
2. Turn Power On

Ensure all disconnect switches (optional) at each fan motor are in the 'ON' position.



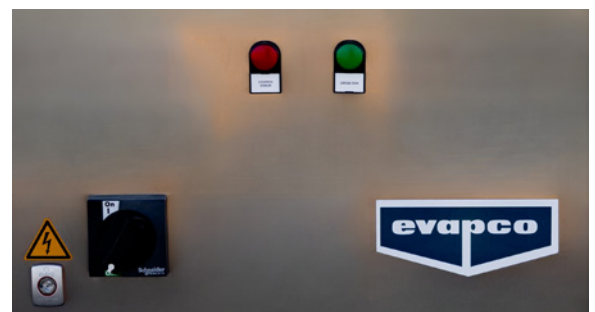
Fan Motor Disconnect (optional)

Ensure that all Manual Motor Protectors (MMP) are in the 'ON' position. There is one MMP per fan motor, and these are located inside the control panel.



MMP in Control Panel

Close and secure all latches on the control panel door and turn 'ON' the main disconnect switch on the outside of the panel.



Main Disconnect in OFF Position

Once power is turned on, the EVAPCO Controller will initialize by going through a sequence of start-up procedures. Wait until after the EVAPCO logo has been displayed on Human Machine Interface (HMI) indicating a successful start-up. (approx. 30 seconds)

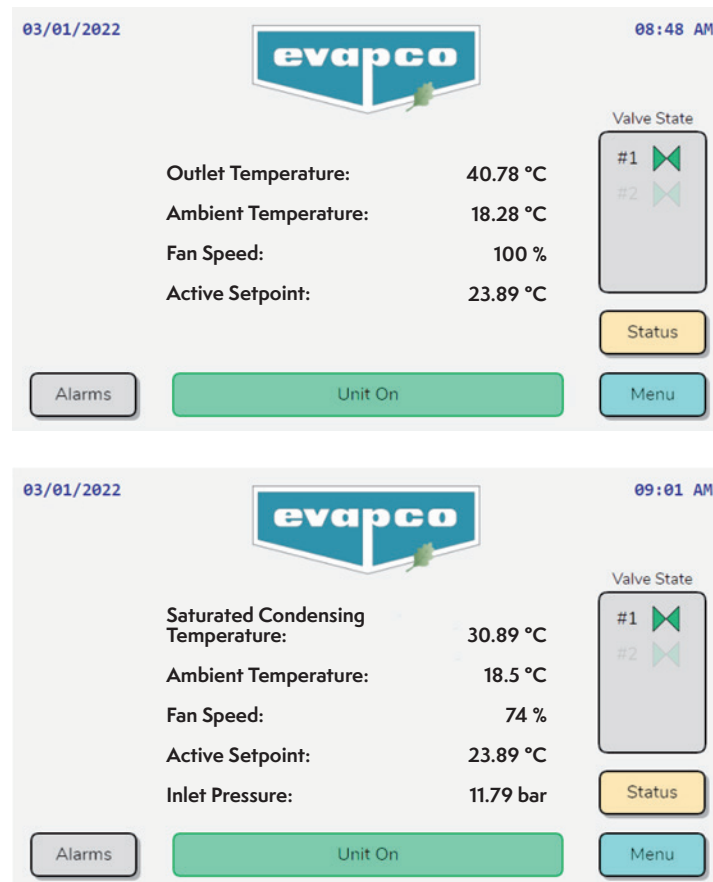
If the red fault lamp illuminates after controller is started, refer to the EVAPCO Controller O&M Manual (Bulletin 1130) for instruction on accessing the alarms screen and what the potential problem is.



EVAPCO Controller Loading Screen

3. Verify Proper Sensor Reading

The eco-Air EVAPCO Controller is equipped to monitor two sensors for operation. Fluid coolers utilize an immersion temperature probe and thermowell, while the air-cooled condenser uses a pressure transducer. Both applications use an ambient temperature sensor. The EVAPCO Controller is configured prior to shipment based on the sensors provided. After the controller boots up, the Home screen will be displayed and both sensors will be viewable. The reading of the *Ambient Temperature* sensor should reflect the current temperature around the control panel enclosure. The *Outlet Temperature* for the fluid cooler will reflect the temperature reading of the process fluid through the unit, or the ambient temperature if no process fluid is yet present in the coils. The *Saturated Condensing Temperature* is a calculation based on the *Inlet Pressure* reading of the condenser. The *Inlet Pressure* reading should be compared to the current pressure of the refrigerant charge in the system. If there is no charge, the pressure reading will read near zero bar.



Home screen for dry coolers and air-cooled condensers

If the temperature and/or the pressure sensor readings do not reflect the current state of the unit check the wiring diagram to ensure the sensors have been connected properly. Refer to the Controller User's Manual for instructions on applying a linear offset to a sensor or calibrating the 4-20mA signal with a meter.

4. Verify Fan Rotation (AC Style Motors Only)

Note: EC motors do not have a Bypass/Off/Auto switch and do not require this step.

Verify correct fan rotation (**AC motors only**). Bump test fan motors by turning Bypass/Off/Auto switch to Bypass for 5-10 seconds. Verify fan rotation matches direction of indicator arrows on fan cowl. If fans rotate in the opposite direction, switch phasing of main power connection. When complete, turn switch to AUTO position.





HMI, VFD and Bypass/ Off/Auto Switch for AC Motors

5. Turn Unit On

On the HMI you will see the home screen below.

Note: The controller's setpoint is factory set to the design temperature/pressure.

Note: If the  button is highlighted yellow, there is an active alarm. Press the  button to go directly to the alarm menu.



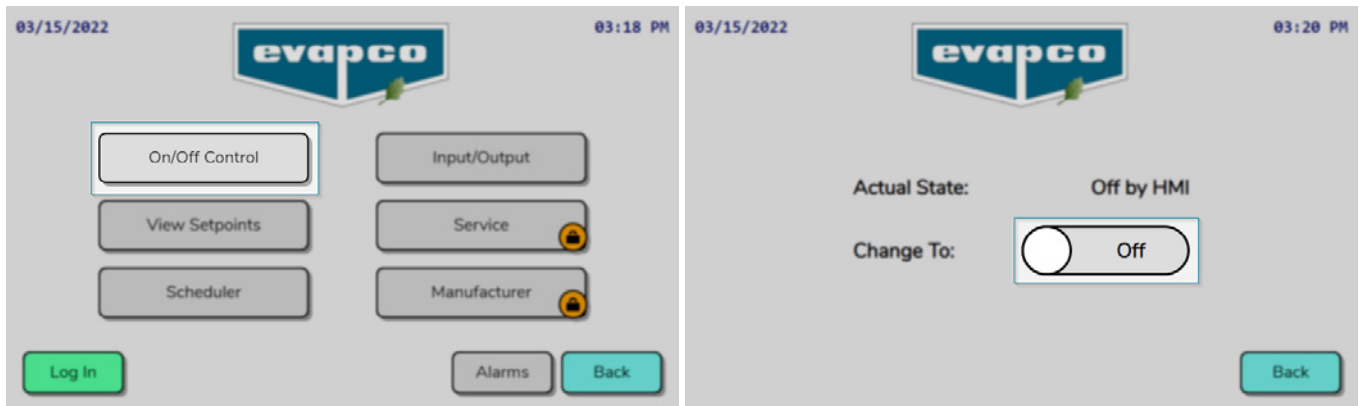
EVAPCO Controller Home Screen

The fan motors are turned off in the controller as default. This is to prevent unexpected fan start up during commissioning.

Navigate to the Main Menu by pressing the  button.

⚠ Caution: The following step has the potential to cause the fans to rotate. Please be sure that the fans are unobstructed and may be operated safely.

In the Main Menu, press the On/Off Control. On the following screen, press the toggle switch to turn the unit on.



Unit Main Menu and On/Off screens

After selecting the toggle switch, the unit state will turn on. If the measured process temperature is greater than the current setpoint, the fans will begin to rotate.

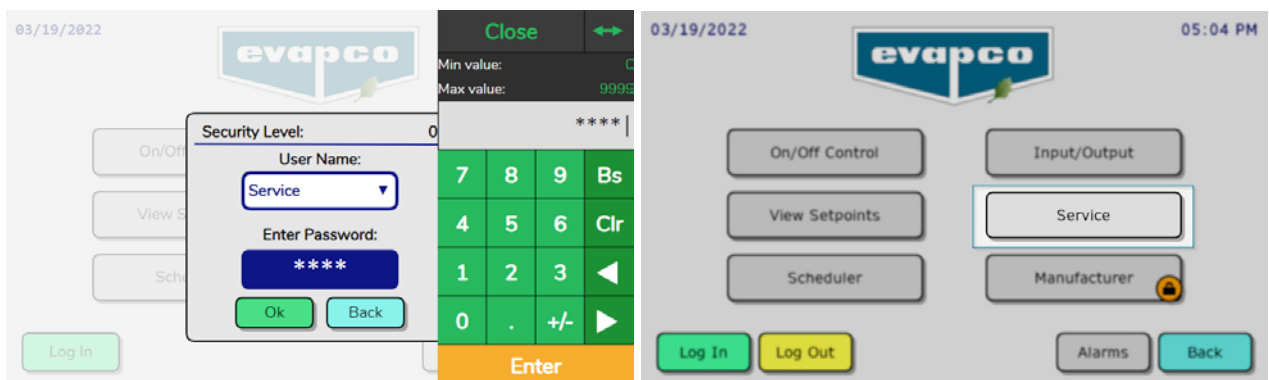


eco-Air unit turned on locally

6. Verify Operation/Manual Mode

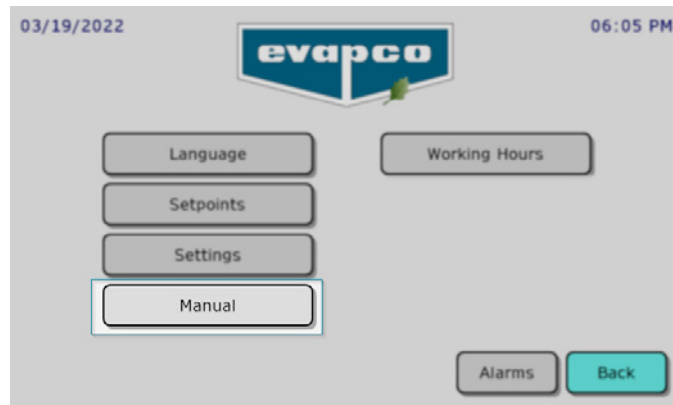
The operation of the fan speed may be done manually through the Service screen. To test whether the controller is functioning properly, and the motors are connected correctly, the fans should be run manually.

From the Main Menu, press the Log In button and enter password 1234 to unlock the Service button.



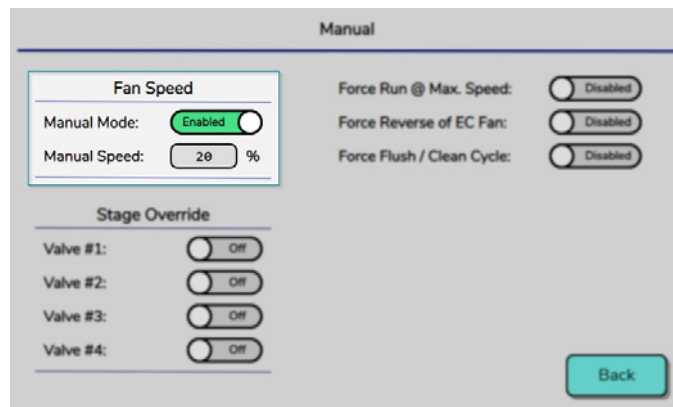
Service menu log in

While in the Service menu, select the Manual button:



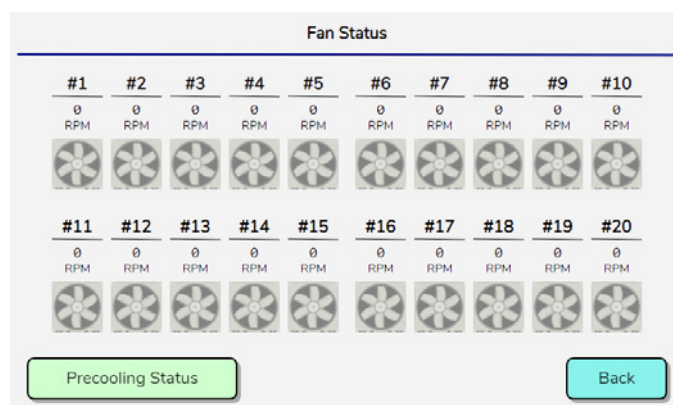
Service submenu Manual button

Set the Manual Speed percentage to the lowest advisable value; for AC motors 20% and EC type motors 10%. Press the enable button for Manual Mode to take effect and the reference fan speed to be set as the Manual Speed percentage. Various other speeds can be tested by changing the value of the manual speed percentage.



Manual fan speed control enabled

For units equipped with EC type fans, the **Status** button on the Home screen will direct the user to the Fan Status screen. From this screen the communication status of the fan and the RPM feedback can be read to determine proper functionality. Reference the EVAPCO Controller O&M Manual (Bulletin 1130) for more information on the Status Screen.



Fan status screen

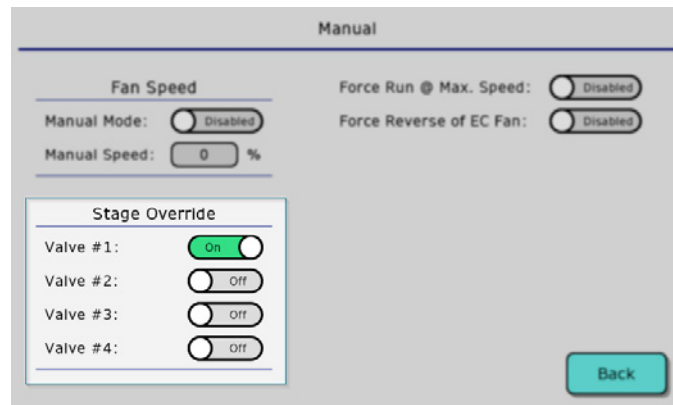
Be sure to disable the manual speed control after testing is complete.

7. Verify Adiabatic Operation

(Adiabatic models only) Products incorporating adiabatic air precooling systems are fitted with a solenoid valve to control adiabatic operation. During normal operation, the adiabatic system is not triggered until the fans are running at 100% speed and the set point is not satisfied.

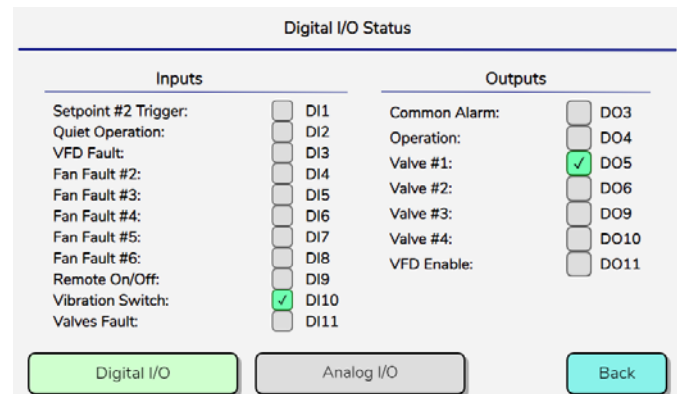
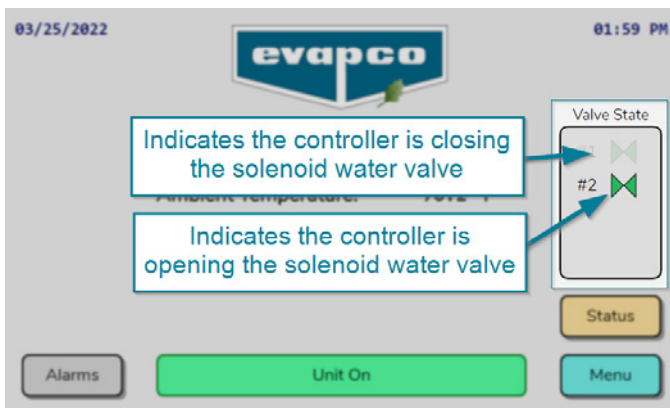
During the testing phase, confirm that the isolation valve is open, and water is flowing sufficiently through the system to either wet the adiabatic pads or provide a uniform spray pattern depending on which precooling system has been attached to the unit.

To manually force the operation of a valve, navigate to the Manual screen in the Service submenu and turn each valve on. Only the number of valves the unit is equipped with need testing.



Manual valve opening enabled

The state of the valve output can either be verified on the Home screen or on the Digital I/O Status screen via the Main Menu and Input/Output section.



Manual valve opening enabled

Note: The default ambient temperature cut off for adiabatic system operation is **below 4.44 °C**.

Be sure to turn Off the Stage Override for all of the valves after testing is complete.



General Comments

Typically, the only parameter requiring adjustment is the setpoint, which is the temperature or pressure that the controller is maintaining by varying the air volume via adjusting the fan speed, or adiabatic system solenoid (if equipped).

Each controller has its own set of programmable parameters. Should there be a need to adjust or fine tune the behavior of the unit, consult the EVAPCO Controller O&M Manual (Bulletin 1130).

If connecting to a Centralized Control System or Building Management System, consult the EVAPCO Controller O&M manual (Bulletin 1130) and the Communication Guide.

EVAPCO PRODUCTS ARE MANUFACTURED WORLDWIDE

[illegible]

[illegible]



WORLDWIDE MANUFACTURING FACILITIES



★ World Headquarters/
Research and
Development Center

📍 EVAPCO Manufacturing
Facilities

EVAPCO, Inc. — World Headquarters & Research / Development Center

P.O. Box 1300 • Westminster, MD 21158 USA
410.756.2600 • marketing@evapco.com • evapco.eu

North America

📍 **EVAPCO, Inc.**
World Headquarters
Westminster, MD USA
410.756.2600
marketing@evapco.com

📍 **EVAPCO East**
Taneytown, MD USA

📍 **EVAPCO East**
Key Building
Taneytown, MD USA

📍 **EVAPCO Midwest**
Greenup, IL USA
217.923.3431
evapcomw@evapcomw.com

📍 **Evapcold Manufacturing**
Greenup, IL USA

📍 **EVAPCO Newton**
Newton, IL USA
618.783.3433
evapcomw@evapcomw.com

📍 **EVAPCO West**
Madera, CA USA
559.673.2207
contact@evapcowest.com

📍 **EVAPCO Alcoil, Inc.**
York, PA USA
717.347.7500
info@evapco-alcoil.com

📍 **EVAPCO Iowa**
Lake View, IA USA

📍 **EVAPCO Iowa**
Sales & Engineering
Medford, MN USA
507.446.8005
evapcomn@evapcomn.com

📍 **EVAPCO LMP ULC**
Laval, Quebec, Canada
450.629.9864
info@evapcolmp.ca

📍 **EVAPCO Select Technologies, Inc.**
Belmont, MI USA
844.785.9506
emarketing@evapcoselect.com

📍 **Refrigeration Vessels &
Systems Corporation**
Bryan, TX USA
979.778.0095
rsv@rvscorp.com

📍 **Tower Components, Inc.**
Ramseur, NC USA
336.824.2102
mail@towercomponentsinc.com

📍 **EvapTech, Inc.**
Edwardsville, KS USA
913.322.5165
marketing@evaptech.com

📍 **EVAPCO Dry Cooling, Inc.**
Bridgewater, NJ USA
908.379.2665
info@evapcodc.com

📍 **EVAPCO Dry Cooling, Inc.**
Littleton, CO USA
908.895.3236
info@evapcodc.com

📍 **EVAPCO Power México S. de R.L. de C.V.**
Mexico City, Mexico
(52) 55.8421.9260
info@evapcodc.com

Asia Pacific

📍 **EVAPCO Asia Pacific
Headquarters**
Baoshan Industrial Zone Shanghai, P.R. China
(86) 21.6687.7786
marketing@evapcochina.com

📍 **EVAPCO (Shanghai)
Refrigeration Equipment Co., Ltd.**
Baoshan Industrial Zone, Shanghai, P.R. China

📍 **EVAPCO (Beijing)
Refrigeration Equipment Co., Ltd.**
Huairou District, Beijing, P.R. China
(86) 10.6166.7238
marketing@evapcochina.com

📍 **EVAPCO Air Cooling Systems
(Jiaxing) Company, Ltd.**
Jiaxing, Zhejiang, P.R. China
(86) 573.8311.9379
info@evapcochina.com

📍 **EVAPCO Australia (Pty.) Ltd.**
Riverstone, NSW, Australia
(61) 02.9627.3322
sales@evapco.com.au

📍 **EvapTech (Shanghai)
Cooling Tower Co., Ltd**
Baoshan District, Shanghai, P.R. China.
Tel: (86) 21.6478.0265

📍 **EvapTech Asia Pacific Sdn. Bhd.** Puchong,
Selangor, Malaysia
(60) 3.8070.7255
marketing-ap@evaptech.com

Europe | Middle East | Africa

📍 **EVAPCO Europe
EMENA Headquarters**
Tongerren-Borgloon, Belgium
(32) 12.39.50.29
info@evapco.be

📍 **EVAPCO Europe BV**
Tongerren-Borgloon, Belgium

📍 **EVAPCO Europe, S.r.l.**
Milan, Italy
(39) 02.939.9041
evapcoeuropa@evapco.it

📍 **EVAPCO Europe, S.r.l.**
Sondrio, Italy

📍 **EVAPCO Europe A/S**
Aabybro, Denmark
(45) 9824.4999
info@evapco.dk

📍 **EVAPCO Europe GmbH**
Meerbusch, Germany
(49) 2159.69560
info@evapco.de

📍 **EVAPCO Middle East DMCC**
Dubai, United Arab Emirates
(971) 56.991.6584
info@evapco.ae

📍 **Evap Egypt Engineering Industries Co.**
A licensed manufacturer of EVAPCO, Inc.
Nasr City, Cairo, Egypt
(20) 10.054.32.198
evapco@tiba-group.com

📍 **EVAPCO S.A. (Pty.) Ltd.**
A licensed manufacturer of EVAPCO, Inc.
Isando, South Africa
(27) 11.392.6630
evapco@evapco.co.za

South America

📍 **EVAPCO Brasil**
Equipamentos Industriais Ltda.
Indaiatuba, São Paulo, Brazil
(55) 11.5681.2000
vendas@evapco.com.br

📍 **FanTR Technology Resources**
Itu, São Paulo, Brazil
(55) 11.4025.1670
fantr@fantr.com